



**Black**

STANDARD | PRIME

Trim in 29 ga only.



**Charcoal**

STANDARD | PRIME | ULTRA



**Pewter**

PRIME

Trim in 29ga only.



**Gray**

STANDARD | PRIME | ULTRA



**Alamo**

STANDARD | PRIME | ULTRA

Trim in 29 ga only.



**Brilliant**

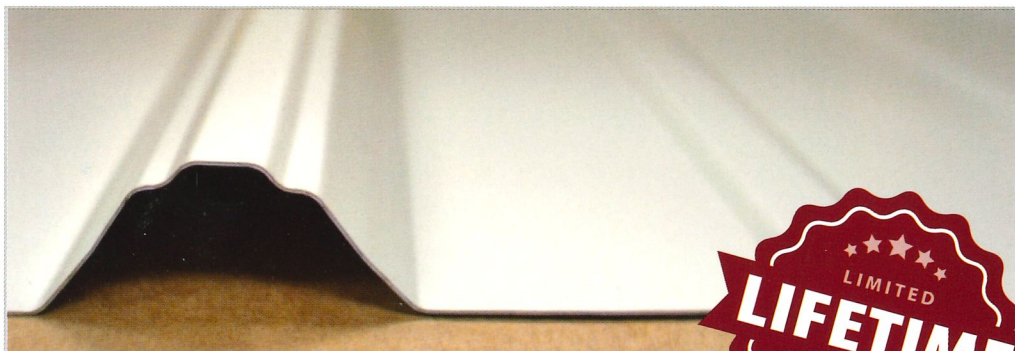
STANDARD | PRIME | ULTRA



Choose CentralGuard for the best protection and a lifetime warranty

# Panel-Loc Plus™

## Color Selection Tool



1140 State Route 14 • Columbiana, OH 44408  
(330) 360-8327

\*Contact your sales person for accurate pricing. † Color variation between orders is normal and not cause for rejection.  
‡ Weathering and appearance variation, including color, sheen, and spangle, is common in non-painted materials and is not a cause for rejection. For consistent appearance, choose a paint-finished product.

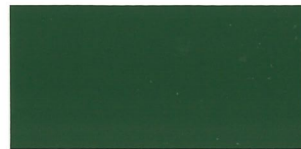
Colors on this chart are close representations of actual metal color, limited by printing and viewing conditions. Color matching is optimized for outdoor viewing.

E CHRT\_PLPN\_180201

**Forest**  
STANDARD | PRIME | ULTRA



**Hunter**  
STANDARD | PRIME | ULTRA



**Colony**  
PRIME

Trim in 26 ga only.



**Crimson**  
PRIME | ULTRA



**Rustic**  
STANDARD | PRIME | ULTRA



**Burgundy**  
STANDARD | PRIME | ULTRA

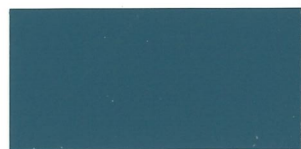


**Gallery**  
PRIME | ULTRA



**Ocean**  
PRIME | ULTRA

Trim in 29ga only.



**Ivory**  
PRIME

Trim in 29 ga only.



**Light Stone**  
STANDARD | PRIME | ULTRA



**Desert**  
PRIME

Trim in 26 ga only.



**Taupe**  
STANDARD | PRIME | ULTRA

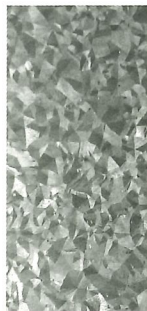


### PREMIUM COLOR

Fluropon® 70% PVDF  
**Copper Metallic**†  
PRIME



Clear acrylic coating  
**Galvalume**‡  
PRIME | ULTRA



**Burnished Slate**

STANDARD | PRIME | ULTRA



**Brown**

STANDARD | PRIME | ULTRA



**Tan**

STANDARD | PRIME | ULTRA



valspar®



ENERGY STAR  
RATED

Check our website to verify which colors meet ENERGY STAR® requirements for steep slope roofs.

# Choose CentralGuard® for the best protection and a lifetime warranty.

CentralGuard is our specific combination of everything that goes into making the highest-quality metal panels. Available on our Prime and Ultra panels, the CentralGuard name is a guarantee that you have the best protection and a lifetime paint warranty.

Choose CentralGuard for the perfect balance of fade protection, rust blocking, and dent resistance.

	STANDARD	<b>OUR BEST SELLER!</b> <b>PRIME</b> CentralGuard	<b>ULTRA</b> CentralGuard
<b>FADE PROTECTION</b>			
Paint Warranty	40-YEAR	<b>LIFETIME</b>	<b>LIFETIME</b>
Paint Thickness	THICK .90 mil	THICKER 1.0 mil	THICKER 1.0 mil
Fade Warranty	30-YEAR	30-YEAR	30-YEAR
Fade Protection	✓	✓✓	✓✓
<b>RUST BLOCKING</b>			
Advanced Rust Blocking	—	✓	✓
Perforation Warranty	—	20-YEAR	20-YEAR
Substrate Thickness	1.12 mil	1.60 mil	1.60 mil
<b>DENT RESISTANCE</b>			
Advanced Dent Resistance	—	✓	✓✓
Steel Thickness	THIN	THICK	THICKEST
Steel Gauge	29 ga.	29 ga.	26 ga.

*Panel-Loc Plus features UL2218 approval for impact resistance and may qualify for a homeowners insurance discount. See your local insurance agent for qualifications.*



## Visualize it on your home.

Use our color visualizer to quickly test different color combinations for your project. Upload a photo of your home, or try out some of our sample projects.



Find the color visualizer at  
[www.centralstatesmfg.com](http://www.centralstatesmfg.com)

### Panel-Loc Plus™

